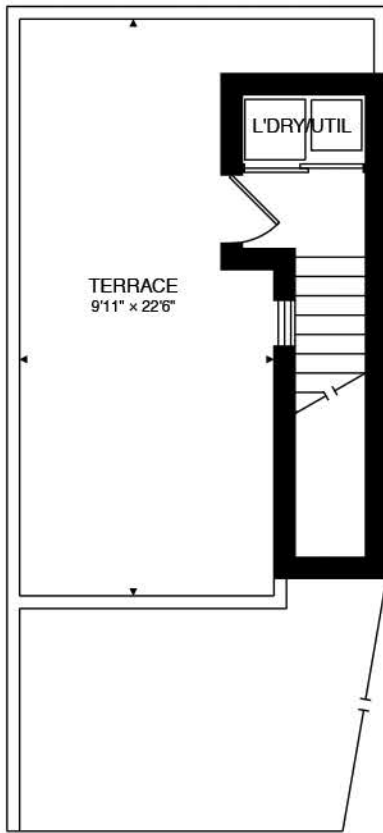
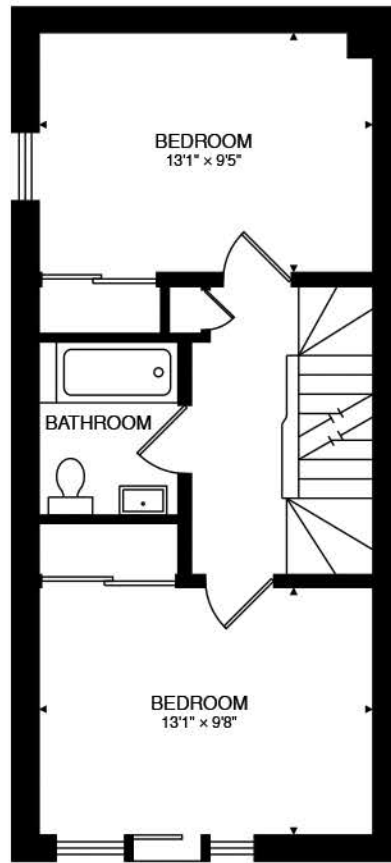


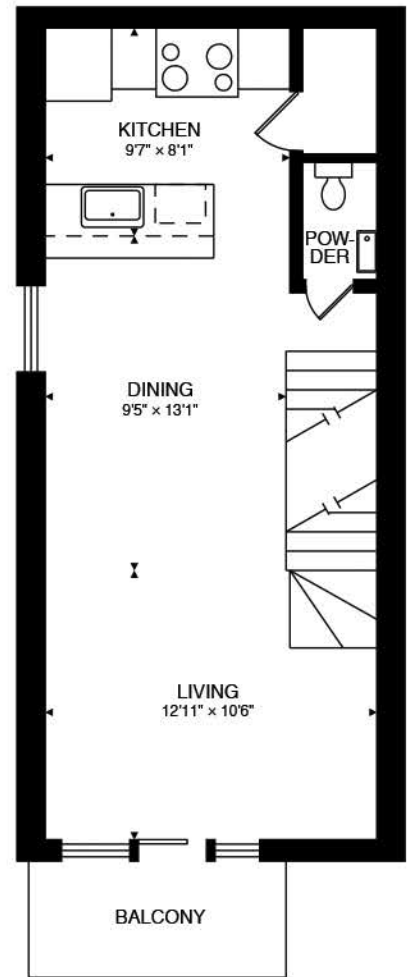
1331 GERRARD ST E #4  
TORONTO, ON M4L 1Y8, CANADA



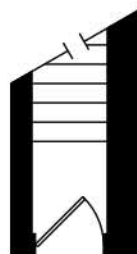
TERRACE



SECOND



MAIN



TOTAL  
1097 sq ft



CAPTURED ON: 3 OCT 2018  
DIMENSIONS, AREAS, LAYOUTS AND DETAILS ARE APPROXIMATE  
AND SHOULD BE CONSIDERED ILLUSTRATIVE ONLY.



Ara Mamourian  
TheSpringTeam.ca  
D: 416-434-1511  
ara@property.ca